

Updated Partner Site Login for External Members and Plant Employees

Effective April 25, 2016

Introduction:

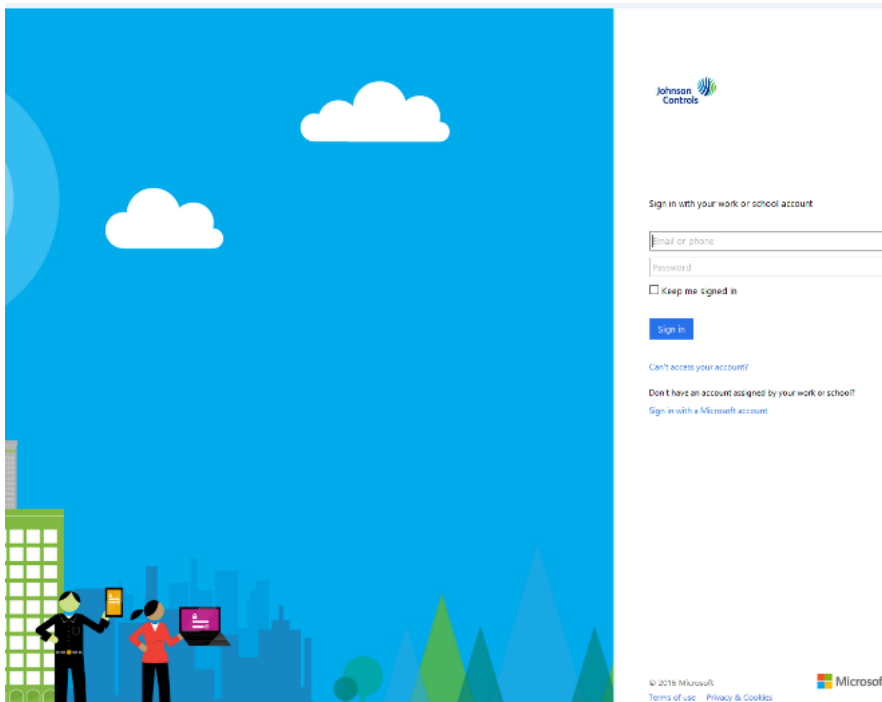
The steps that external members use to access partner sites and plant employees use to access the plant worker portal will change after the vNext migration. These updated login steps will go into effect April 25, 2016.

Details

Beginning April 25, external members of JCI partner sites and plant employees accessing the plant worker portal should follow these steps when logging in.

Scenario 1 – Accessing a partner site directly

1. Navigate to partner URL
2. At this login screen, enter <lastname>@jcipartners.com. ****Do not enter a password****. Click enter to tab to next screen.



3. On this screen, click the **Customers & Partners** tab. Enter your login credentials. Click Submit to be taken to the partner site.

Updated Partner Site Login for External Members and Plant Employees

Effective April 25, 2016

Employees & Contractors Customers & Partners

Email
testuser10@cgtest.com

Password
.....

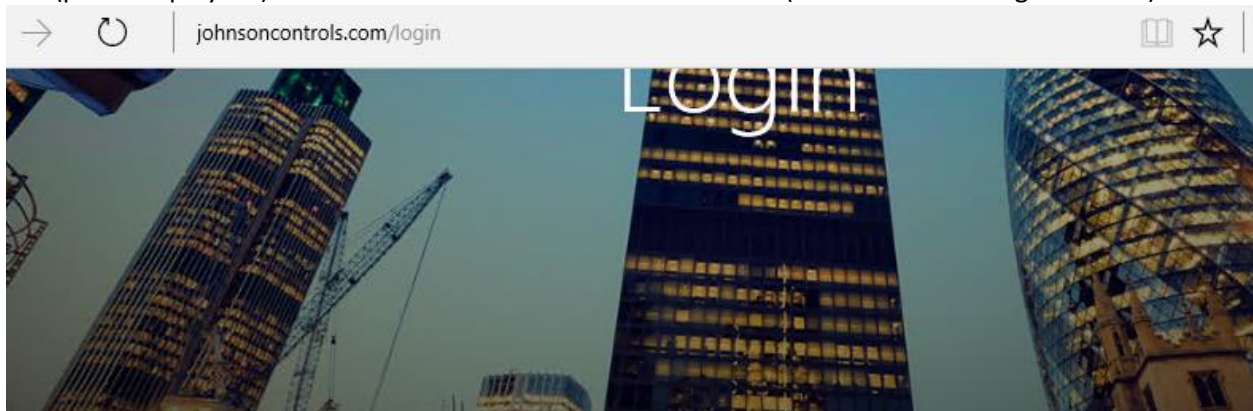
[Forgot password?](#) [Change password](#)

Submit

[Need help?](#)

Scenario 2 – Accessing a partner site after having already authenticated

1. If you've already authenticated through the portal and open a new browser instance, you'll be taken to johnsoncontrols.com. Select either Buildings (external partners) or Plant worker portal (plant employees). You will be redirected to the selected site (ie. no additional login screens).



LOGIN

Partners	Employees
Batteries	The links below are provided to access site authorized individuals only. Individuals us without or outside their authorization will disciplinary action, civil, and/or criminal p country, state, provincial, or other national
Buildings	

Updated Partner Site Login for External Members and Plant Employees

Effective April 25, 2016

Scenario 3 – Plant Portal Access/Plant Worker Access

All JCI employees (knowledge workers or Plant employees) accessing the Plant Portal within a JCI facility will need to be logged into the machine using their own credentials (global id and password).

The link to the Plant Portal is: <https://partners.jci.com/sites/plantportal>

The following are the Instructions to access the site:

1. Open Google Chrome
2. Go to www.johnsoncontrols.com
3. Locate the "Employees" section and click "Plant worker portal for employees at production/manufacturing facilities" to be taken directly to the HR Atlas portal
4. Lastly, please click "HR Atlas" and access will be granted.

As a back-up to view pay slips, U.S. employees can log in directly to ADP: <https://ipay.adp.com>