

# Energy and greenhouse gas data management



Global data management  
for energy and greenhouse  
gas emissions



## Turn energy consumption and greenhouse gas emissions into enterprise assets.

Even as energy prices continue to climb, Johnson Controls will show you how your costs can go down. And hand-in-hand with this, we'll help you take steps toward minimizing your greenhouse gas (GHG) activities, or carbon footprint. We'll provide a data management platform that gives you online access to critical energy information you need. As a result, you can identify new efficiency opportunities. Cut utility costs. Plus, track, manage and forecast greenhouse gas emissions across your facility portfolio.

## Get the critical data you need, when you need it.

The Johnson Controls Web-based energy and greenhouse gas data management tool provides a global, enterprise-wide view of energy and GHG performance. You get the information you need quickly and easily for benchmarking and best practice sharing. And you'll generate reports faster and more efficiently.

With this technology, you'll benefit from:

- Greater data accuracy
- Customizable modules that fit your business requirements
- Simple, intuitive, secure Web-based interface
- Greenhouse gas calculations that conform to internationally accepted standards
- Electronic data storage for immediate access



## Measure, manage and forecast – from a facility level to a global portfolio level

Johnson Controls energy and carbon management web tools house over \$3 billion in enterprise energy and environmental data. It allows you to collect the data you need and create reports in the way you need them. It tracks results in local currencies and units of measurement for an accurate picture of your energy use and carbon management.

Five different modules cover all aspects of your energy consumption, costs and carbon footprint:

### Utility

Captures all data found on utility bills – cost, consumption, demand, on-peak /off-peak billing components, power factor charges, transition charges, taxes and more. Simple, customizable templates for easy data entry. User-friendly drill-down capability enables quick access to relevant information.

### Greenhouse gas (GHG)

Uses information from multiple modules to calculate your global greenhouse gas inventory. Incorporates utility information, vehicle fleet, stationary generation, refrigerant leakage, energy efficiency projects and renewable energy credits to calculate a comprehensive inventory. Utilizes the internationally accepted calculation methodology developed by the World Resources Institute to convert source emissions to CO<sub>2</sub> equivalent emissions by location and globally. Attaches electronic source data (scanned utility bills, .doc or .xls files, etc.) to manage all documentation needed for data validation.

### Energy projects

Tracks important information about all energy projects throughout your organization. Provides a corporate perspective on efficiency opportunities and progress. Energy efficiency projects feed into a forecast of future energy consumption and greenhouse gas emissions. Also used as a tool to communicate best practices and opportunities globally.



### Facility equipment

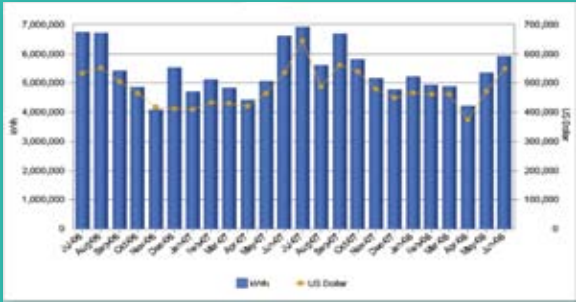
Manages relevant data on all energy consuming equipment, including type, manufacturer, model, size, condition and age. Also tracks warranty and specification documents for each equipment record. Helps track energy and asset management activities.

### Environmental

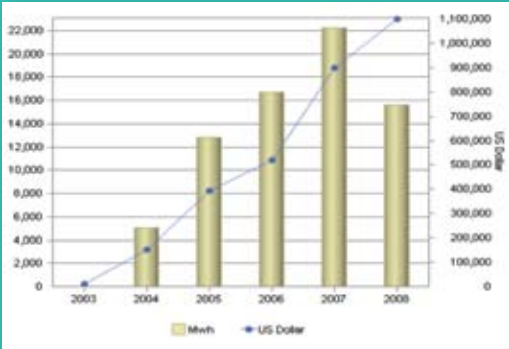
Manages information about all types of waste (hazardous and non-hazardous) including disposition method, refrigerant use, air emissions and water discharges.

## Make your energy management program future ready

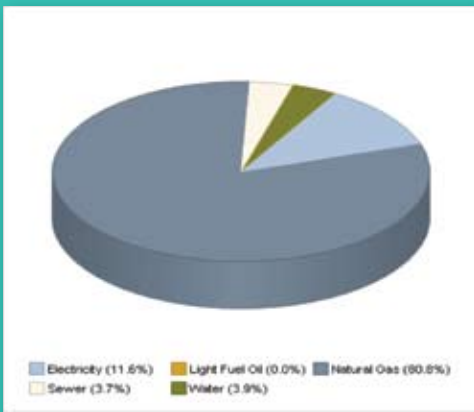
With continuous customer-driven enhancements and advancements, Johnson Controls can help your company not just manage the future risks of a volatile market, but benefit from them.



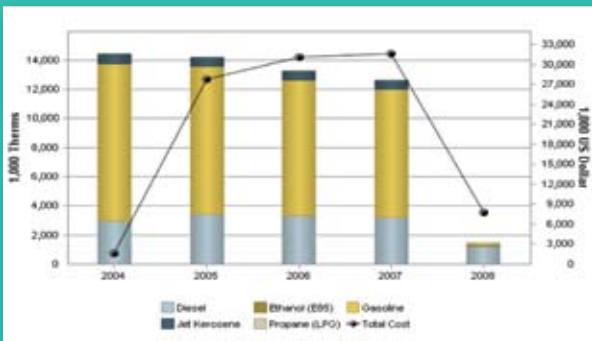
Two Year Electricity Trend in kWh and Dollars



Annual Energy and \$ Savings from Completed Projects



2007 Energy Spend by Utility Type



Consumption and Cost by Fuel Type

Printed on recycled paper.

© 2008 Johnson Controls, Inc. P.O. Box 423, Milwaukee, WI 53201 Printed in USA PUBL-5517  
[www.johnsoncontrols.com](http://www.johnsoncontrols.com)

