



Automotive Market

exacq[®]
Technologies



Hare Chevrolet

Hare Chevrolet

2001 Stony Creek Rd.
Noblesville, IN 46060



Hare Chevrolet, located in Noblesville, Indiana sells more than 4,000 cars per year.

Founded in 1847, Hare Chevrolet is one of the oldest transportation companies in the United States. Now in its sixth generation of family ownership, Hare Chevrolet continues to sell new and used cars to families in Noblesville, Indiana, with projections to sell more than 4,000 cars in 2012.

In 1999, Hare Chevrolet expanded into a 50,000 square foot dealership including a service center, showroom, administrative area and child's playroom. A constant flow of cars drive through the parking lot to get to the 50 service center bays or showroom to view cars. Over 1,000 new and used Chevrolets sit exposed in the front lot, valued at more than \$20 million.

system (VMS) software to monitor the lot after business hours. Several existing, outdated analog cameras and a digital video recording (DVR) system were beginning to fail.

To protect these valuable assets, Hare Chevrolet decided to upgrade its surveillance system with video management

Working with Conzer Security of Carmel, Indiana, Hare Chevrolet selected and installed new indoor and outdoor IQeye IP cameras and exacqVision VMS software. Hare Chevrolet was able to immediately setup the exacqVision software since it came with auto-detection of IP cameras.

exacqVision Start VMS software proved to be the most cost-effective, easiest video surveillance system to use and operate. With multi-monitor operation, the IT, sales and service center team at Hare Chevrolet could now observe activity during business hours and after hours with complete coverage of the entire lot and building.

Co-owners Courtney Cole and Monica Peck monitor customer traffic in the showroom and cashiers to prevent a shortage in any drawers and service manager, David Rains, can view the quick lube area and service center. Each staff member quickly learned how to operate the straightforward software with no training or expertise.

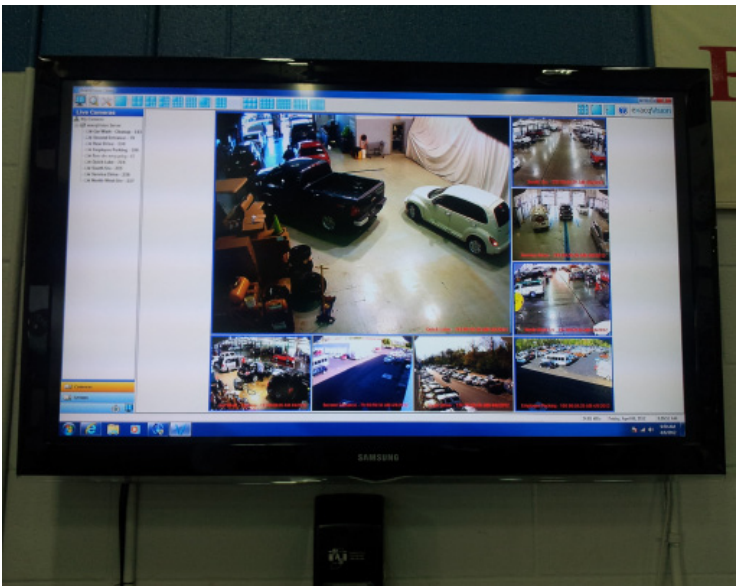
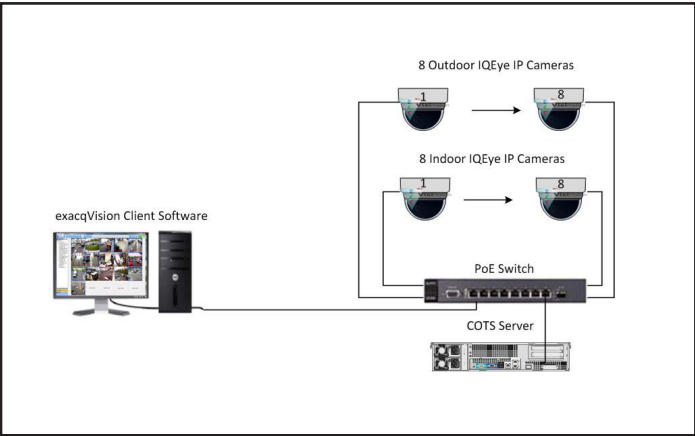
After the exacqVision system was installed, it was utilized to figure out how \$8,800 of damage was done to one of the vehicles in the Hare Chevrolet inventory. John West, the company's IT Manager, arrived at the facility one morning and discovered the damage. The easy to use playback features on the exacqVision client quickly revealed that the damage was caused by a contractor's forklift. The footage was exported and emailed to the contractor as evidence of how the damage occurred. "With the exacqVision software we are able to quickly identify how and when accidents happen," said West. "The software's simple, sophisticated search and playback functionality has made my job significantly easier."

Furthermore, the digital pan-tilt-zoom (PTZ) feature on the client software enabled Hare Chevrolet staff members improved zooming capabilities and better image quality to identify incidents. PTZ functionality also assists them with monitoring the transaction areas in the facility to prevent thefts before they happen.

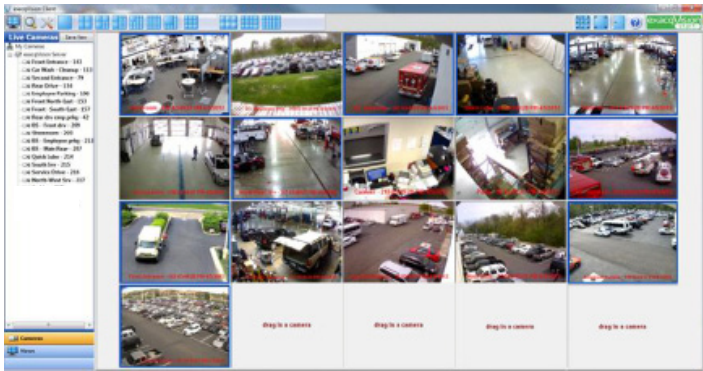
Hare Chevrolet protects their inventory and minimizes vandalism to their vehicles, which saves thousands of dollars per year that would be lost without the exacqVision video surveillance solution.

Equipment-At-a-Glance

SERVER HARDWARE	
COTS Server	Commercial off-the-shelf server with exacqVision VMS software
NETWORK CAMERAS - 16 TOTAL INCLUDING THE FOLLOWING MODELS	
8 Indoor IQeye IP cameras with H.264 video compression	
8 Outdoor IQeye IP cameras with H.264 video compression	



Service center camera views are shown in the service area.



exacqVision client software displays all 16 IP cameras at once for easy viewing and control.

exacqVision[®]
start

Meet the Integrator



Conzer Security Inc., headquartered in Carmel, Indiana, designs, installs and services CCTV and video surveillance systems in the Midwest region. Conzer Security has expertise and capabilities that allow them to design an efficient, yet powerful and effective surveillance system that leverages existing network infrastructures without negatively impacting their existing LAN performance.



“We saved \$8,800 when we found footage of damage occurred by a contractor in the parking lot after hours. Without the exacqVision easy search capability, I would have spent hours trying to pinpoint when the incident occurred and how it happened.”

Monica Peck
Co-Owner
Hare Chevrolet