

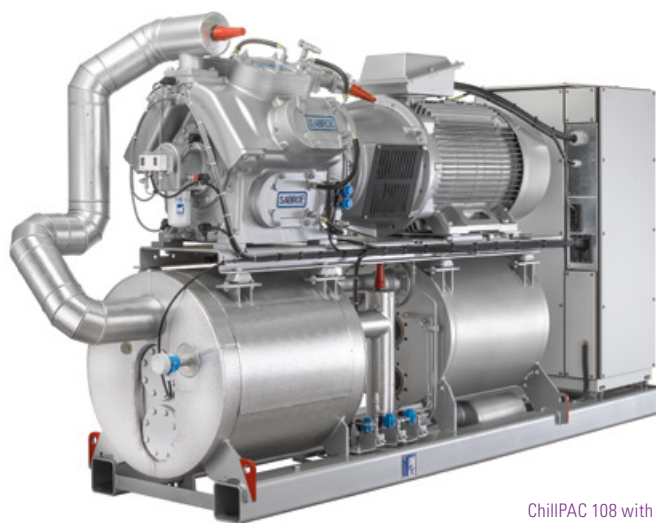
SABROE® ChillPAC chillers

Extremely compact packaged ammonia chillers based on reciprocating compressors, with a 60–1400 kW capacity range

ChillPAC ammonia-based chillers feature an ultra-compact format so narrow that they can even pass through a normal doorway. This is achieved by having an extra-compact shell-and-plate evaporator/condenser, oil separator and control system all built in and fully integrated into a unique vibration-resistant design.

This means ChillPAC units provide exceptional refrigeration capacity – taking full advantage of the many different models of ultra-reliable SABROE® reciprocating compressors – while only taking up a minimum of space. This makes ChillPAC units ideal in installations where space is limited, and where there are restrictions on the refrigerant charge used.

ChillPAC chillers are most cost-effective when fitted with a variable-speed drive (VSD) that makes it easy to deal with changing circumstances and different operating requirements.



ChillPAC 108 with VSD panel and UniSAB as standard

Range

There are 21 different models in the standard ChillPAC range, with capacities ranging from 60 kW to 1400 kW.

| Advantages | Benefits |
|---|--|
| Factory-assembled, pre-tested packaged units based on SABROE reciprocating compressors world-renowned for their reliability | Easy pre-commissioning makes installation and running-in both faster and cheaper. Factory acceptance test (FAT) available (as an option) |
| Exceptionally compact design and fully integrated configuration result in less than half the footprint of bespoke chiller designs | Major savings on both weight and space, resulting in lower installation costs. Much less need for expensive separate machinery rooms |
| Indirect cooling and uncomplicated flooded evaporating system, using ammonia (R717) only | Greater safety and outstanding reliability |
| Exceptional COP and outstanding part-load performance | Greater cooling effect from a smaller refrigerant charge, and optimum load structure over the entire capacity range |
| Refrigerant charge 50% smaller than with conventional chillers, because of special condenser/evaporator design | Higher output per unit kW/kg refrigerant, lower unit cost and lower installation costs |

Options

- Variable-speed drive (VSD)
- Soft-starter or Y/D starter
- Desuperheater
- Subcooler
- External condenser
- Control panel mounted separately
- S and L models: 1800 rpm at 60 Hz or VSD
- Factory acceptance test (FAT), customer-witnessed
- Heater package for low-temperature heat pump operation
- Shunt solution for high-temperature difference.