



INSTALL CONFIDENCE.



YORK® Commercial and
Industrial
Supply and Exhaust Fans
Creating air-flow efficiencies





DOWNBLAST | EVD

- Roof-mount, spun aluminum downblast.
- Direct or belt drive, **G^{plus}** EC motor option.
- Application: General exhaust for schools, churches, and office buildings.
- Capacity: Up to 39,100 cfm; 0 - 1.5" w.g.
- Miami-Dade Approved for High Velocity Hurricane Zones (NOA# 10-0615.09).



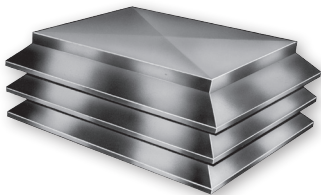
UPBLAST | EVU

- Roof-mount, spun aluminum upblast; direct or belt drive; **G^{plus}** EC motor option.
- Application: Fumes, commercial kitchens, and exhaust of other contaminants.
- U.L. Listed for Smoke Control Systems (500°F / 4-Hours; 1000°F / 1-Hour).
- U.L. 762 Listed for Grease Laden Air Exhaust (400°F).
- Capacity: Up to 22,900 cfm; 0 - 4.3" w.g.
- Miami-Dade Approved for High Velocity Hurricane Zones (NOA# 10-0615.09).



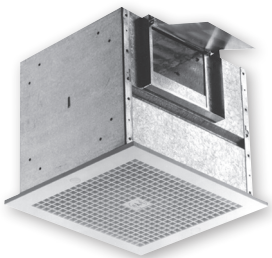
LOW CONTOUR DOWNBLAST | CLD

- Roof-mount, low contour downblast.
- Direct or belt drive.
- Application: General exhaust for schools, churches, and office buildings.
- Capacity: Up to 20,000 cfm; 0 - 1.5" w.g.



CENTRIFUGAL DOWNBLAST ROOF EXHAUSTER | CRDE

- Roof-mount, low contour downblast.
- Architectural, tiered hood design.
- Direct or belt drive.
- Application: General exhaust for schools, churches, and office buildings.
- Capacity: Up to 19,400 cfm; 0 - 1.5" w.g.

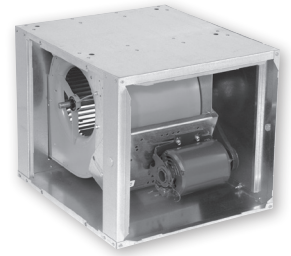


CEILING INLINE | CI

- Ceiling or inline mount.
- Low sound levels.
- Direct drive.
- Application: General exhaust for lavatories, conference rooms, and institutions.
- Capacity: From 32-3,290 cfm; 0-1.5" w.g.
- U.L. Listed for use over bathtubs and showers when connected to a GFCI protected branch circuit.

CEILING CABINET | CC, CCB

- Inline duct-mount.
- Belt drive.
- Application: General purpose duct blower for heating/cooling systems.
- CC (Single) Capacity: From 750-6,350 cfm; 0-1.5" w.g.
- CCB (Twin) Capacity: From 1,500-12,700 cfm; 0-1.5" w.g.



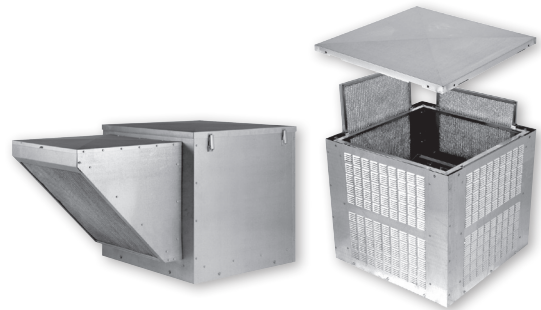
CENTRIFUGAL INLINE | CIX

- Ceiling or inline mount.
- Low sound levels; EC motor.
- Application: General exhaust for lavatories, conference rooms, and institutions.
- Capacity: From 100-500 cfm; 0-1.0" w.g.
- Selection of grille designs including Energy Star lighted grilles.
- UL 705 and UL 507 listed for use over bathtubs and showers when connected to a GFCI protected branch circuit.



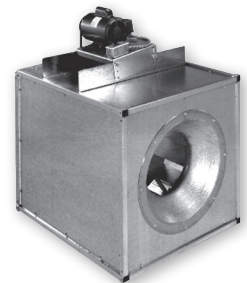
MAKE-UP AIR, FILTERED SUPPLY | MAF, MAS

- Roof-mount filtered supply.
- Direct or belt drive.
- Side Intake (MAS Model)
- Application: Supply fresh air to buildings or systems by replacing the exhaust of contaminated air (e.g., Commercial kitchens).
- Capacity: Up to 14,400 cfm; 0-1.0" w.g.



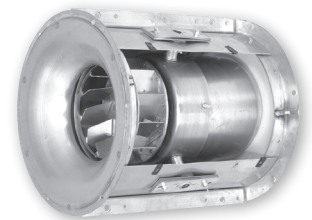
CENTRIFUGAL INLINE SQUARE | CIS

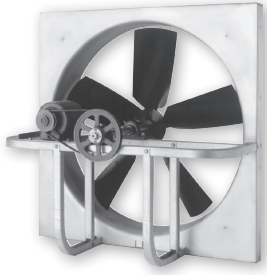
- Square inline duct-mount.
- Direct or belt drive; **Greenplus** EC motor option.
- Application: Supply, return, or exhaust air for general HVAC systems.
- Capacity: From 103-27,500 cfm; 0-3.5" w.g.
- Inlet filter box with 1" or 2" filters.



CENTRIFUGAL INLINE ROUND | CIR

- Tubular inline duct-mount.
- Aluminum construction.
- Direct or belt drive.
- Application: Supply or return air; exhaust fumes or humid air.
- Capacity: Up to 22,000 cfm; 0-3.0" w.g.





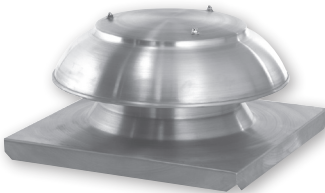
AXIAL PROP | PAFP, PAFX, PAFC, PAFL, PAFM, PAFH, PAFB

- Wall-mount propeller fans.
- Direct or belt drive.
- Application: General supply and exhaust for warehouses, factories, and mechanical rooms.
- Capacity: Up to 68,100 cfm; 0-1.5" w.g.



HOODED, ROOFTOP MOUNT PROP | PHRC, PHRF

- Hooded, roof-mount propeller fans.
- Direct or belt drive.
- Application: Supply fresh air or exhaust hot, humid, and/or foul air.
- Capacity: Up to 70,000 cfm; 0-0.5" w.g.



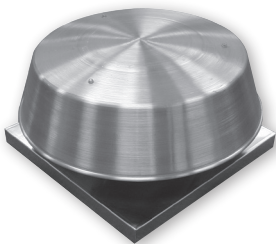
LOW CONTOUR PROP DOWNBLAST | PLDE, PLDS

- Roof-mount, low contour propeller downblast.
- Application: General exhaust or supply for low pressure systems.
- Capacity: Up to 2460 cfm; 0-1.25" w.g.



VERTICAL DISCHARGE EXHAUSTER | VUC, VUX, VUF, VUZ, VUS

- Roof-mount propeller upblast.
- Direct or belt drive.
- Standard height or low profile.
- Application: Rapid air removal or general ventilation exhaust.
- U.L. Listed for Smoke Control Systems (500°F / 4-hours; 1000°F / 15-minutes).
- Capacity: Up to 82,400 cfm; 0-1.0" w.g.

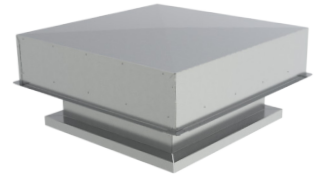


PRESSURE RELIEF VENTILATOR | SVC, SVF

- Low silhouette, spun aluminum design.
- Application: Pressure relief, discharge cap, outside air inlet hood.
- Capacity: Up to 20,000 cfm.

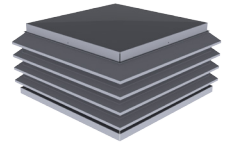
HOODED, ROOF GRAVITY VENTILATOR | GHRV

- Hooded roof gravity ventilators.
- Galvanized or aluminum construction.
- Application: Building pressure relief and fresh air intake.
- Capacity Range: Up to 72,000 cfm.



ARCHITECTURAL TIERED GRAVITY HOOD | GHT

- Roof-mount architectural tiered hood design.
- Gravity air intake or relief.
- Application: Building pressure relief and fresh air intake.
- Compatible with Linea centrifugal exhausters.



ROOF TURBINE | GTRT, GTRH, GTRA

- Turbines: General ventilation of factories, farm/agricultural buildings, commercial/public structures, and homes.
- Pul-Air for air exhaust with no moving parts.
- Insul-Air for extended airshaft to clear roof peaks, etc.



UTILITY SET | US

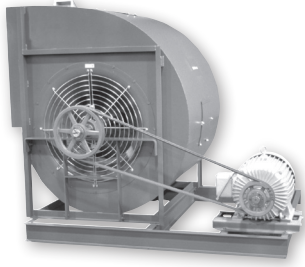
- Class I heavy-gauge galvanized steel, roof/floor/inline mount utility blower.
- Belt drive; backward inclined wheel.
- Application: Commercial kitchen and fume exhaust, building pressurization, and fresh air supply.
- U.L. 762 Listed for Grease Laden Air Exhaust (500°F).
- U.L. Listed for Smoke Control Systems (500°F / 4-hours; 1000°F / 41-minutes).
- Capacity: Up to 36,000 cfm; 0-5.0" w.g.



STACK FAN | YSF

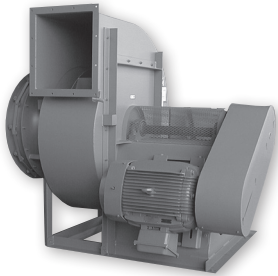
- Modular, scalable, and stackable design capable of standalone applications.
- Cooling Coil Fan Array
- Application: Air handlers, rooftop units, and retrofit applications for commercial facilities such as, telecom data centers, commercial facilities, healthcare facilities, and schools.
- Capacity: Up to 200,000 cfm; 0 - 10.0" w.g.





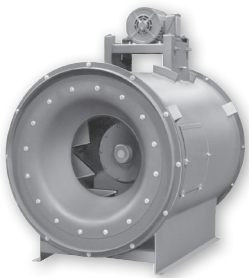
CENTRIFUGAL FREESTANDING | ICF

- Class I, II, III, IV construction, free standing SWSI/DWDI centrifugal fan.
- Direct or belt drive (Arr. 4, 7, 8).
- Backward inclined and airfoil wheels.
- Application: Exhaust and supply in typical duct systems; able to handle many special environments such as high temperature, corrosive, spark resistant, and commercial kitchen.
- Capacity: Up to 264,000 cfm; 0-10.0" w.g.
- U.L. 762 Listed for Grease Laden Air (300°F & 500°F).
- U.L. Listed for Smoke Control Systems (500°F / 4-hours; 1000°F / 1-hour).



INDUSTRIAL EXHAUSTER | IEF

- Heavy-duty, high pressure construction, free standing SWSI industrial fan.
- Direct or belt drive (AH wheel only Arr. 4, 7, 8).
- 3 Wheel Types: General, fibrous material handling, and air handling.
- Application: Ventilation or exhaust of dust, granular materials, and fibrous materials as well as air handling.
- Capacity: Up to 60,000 cfm; 0-30.0" w.g.



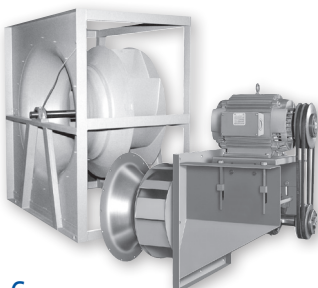
TUBULAR CENTRIFUGAL INLINE | CTI

- Class I, II, III heavy-gauge steel construction, tubular centrifugal inline fan.
- Belt drive.
- Backward inclined and airfoil wheels. Horizontal or vertical mount.
- Application: Exhaust, supply, or return air in ducted (medium to high) pressure systems.
- Capacity: Up to 221,480 cfm; 0-10" w.g.
- U.L. 762 Listed for Grease Laden Air (300°F & 500°F).
- U.L. Listed for Smoke Control Systems (500°F / 4-hours; 1000°F / 1-hour).



MIXED FLOW INLINE | MFSI

- Class I, II heavy-gauge steel, mixed flow inline fan.
- Belt drive; patented wheel design.
- Application: Exhaust, supply, or return air in ducted (medium to high) pressure systems requiring lower sound levels.
- Capacity: Up to 155,000 cfm; 0-7.0" w.g.
- U.L. 762 Listed for Grease Laden Air (300°F & 500°F).
- U.L. Listed for Smoke Control Systems (500°F / 4-hours; 1000°F / 1-hour).



PLENUM PLUG FAN | PPF, CPF

- Class I, II, III heavy-gauge steel construction, unhooded centrifugal.
- Direct or belt drive (Arr. 4, 7, 8 ESP models).
- High efficiency backward inclined (size 105 - 165) and airfoil (size 182-890) wheels.
- Application: Supply air in a pressurized plenum for built-up air handling system; excellent for retrofit or replacement systems.
- Capacity: Up to 250,000 cfm; 0-10.0" w.g.

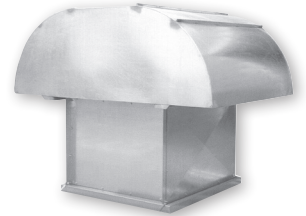
WALL MOUNTED PROP FANS | PWD, PWB, PWM

- Heavy-duty construction, wall-mount propeller fans.
- Direct or belt drive.
- Application: Supply/Exhaust for warehouses, factories, and mechanical rooms.
- Capacity: Up to 323,000 cfm; 0-1.8" w.g.
- Aluminum or steel propeller available.



HOODED, ROOF MOUNT PROP FANS | IPHRD, IPHRB, IPHRR, IPHRT

- Heavy-duty construction, hooded roof-mount propeller fans.
- Direct or belt drive.
- Application: Supply fresh air or exhaust hot, humid, and/or foul air.
- Capacity: Up to 72,755 cfm; 0-0.5" w.g.
- Aluminum or steel propeller available.



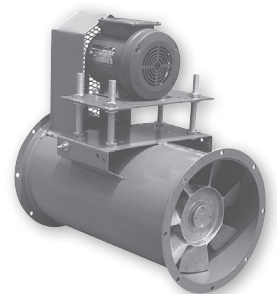
UPBLAST ROOF FANS | LDRU, LBRU, TDRU, TBRU

- Heavy-duty construction, roof-mount propeller upblast.
- Direct or belt drive.
- Standard height or low profile.
- Application: Rapid air removal, high temperature, or general ventilation exhaust.
- Capacity: Up to 82,481 cfm; 0-1.0" w.g.
- Aluminum or steel propeller available.



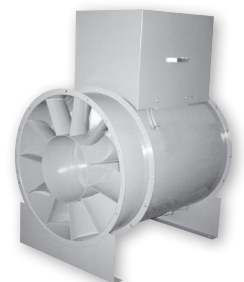
TUBE AXIAL | ATD, ATB

- Low to medium pressure ducted applications.
- Direct or belt drive.
- Horizontal or vertical mount.
- Application: exhaust contaminated/hot air and supply air to cool/pressurized interior spaces.
- Capacity: Up to 150,000 cfm; 0-2.5" w.g.
- Aluminum or steel propeller available.



VANE AXIAL | AVD, AVB

- High pressure ducted applications.
- Direct or belt drive; horizontal or vertical mount.
- Fixed aluminum or steel.
- Application: exhaust contaminated/hot air and supply air to cool/pressurized interior spaces.
- Capacity: Up to 120,000 cfm; 0-7.0" w.g.
- U.L. Listed for Smoke Control Systems (500°F / 4-hours; 1000°F / 15-minutes - VXD steel propeller only).





INTELLIGENT PRESSURE CONTROL MODULE | IQ-IPCM

- Precise pressure control suitable for low pressure applications (-1.25 to +1.25" w.g.).
- Multi-color back light LCD display.
- 4 button membrane keypad for simple menu navigation.
- Analog Output 0-10 VDC signal for EC motor control.
- Interlocks for controlling up to two appliances NEMA 1 enclosure.
- Application: Ideal for multi-story, or high rise environment where maintaining specific duct pressure is desired, such as make up air, clothes dryers, kitchen hoods, and bathroom exhaust.



MULTI-SPEED CONTROLLER | IQ-MS

- Remote interface for setting, monitoring, and switching between two independent motor speeds for a single motor/fan.
- Dual set-point interface.
- Analog Output 0-10 VDC signal for EC motor control.
- Includes on board digital multi-meter nodes to provide set-point and RPM measurements.
- LED indicator flashes set-point value providing visual confirmation of operating speed.



 **YORK**[®]
INSTALL CONFIDENCE.

Printed on recycled paper.

Johnson Controls, the Johnson Controls logo, YORK[®] and Heresite[®] are trademarks of Johnson Controls, Inc., or its affiliates, in the United States of America and/or other countries.

©2017 Johnson Controls, Inc., P.O. Box 423, Milwaukee, WI 53201 Printed in USA PUBL-7588 (8649) PRODUCT HANDBOOK NOV. 2017
www.johnsoncontrols.com

