

OpenBlue

Location Manager

Helping Companies Plan a Safe Return to the Office

The office may not be dying, but it's safe to say it has changed forever. Increasingly, companies are moving to a hybrid model where employees spend part of the workweek in the office and part of it working from home. Concerns about physical distancing mean that

employers are making extra efforts to reconfigure buildings for safe in-person collaboration. Insights from technology, such as OpenBlue Location Manager, can give companies the direction they need to provide safe, healthy spaces for employees who work on-site.

Secure and Anonymized Location Tracking

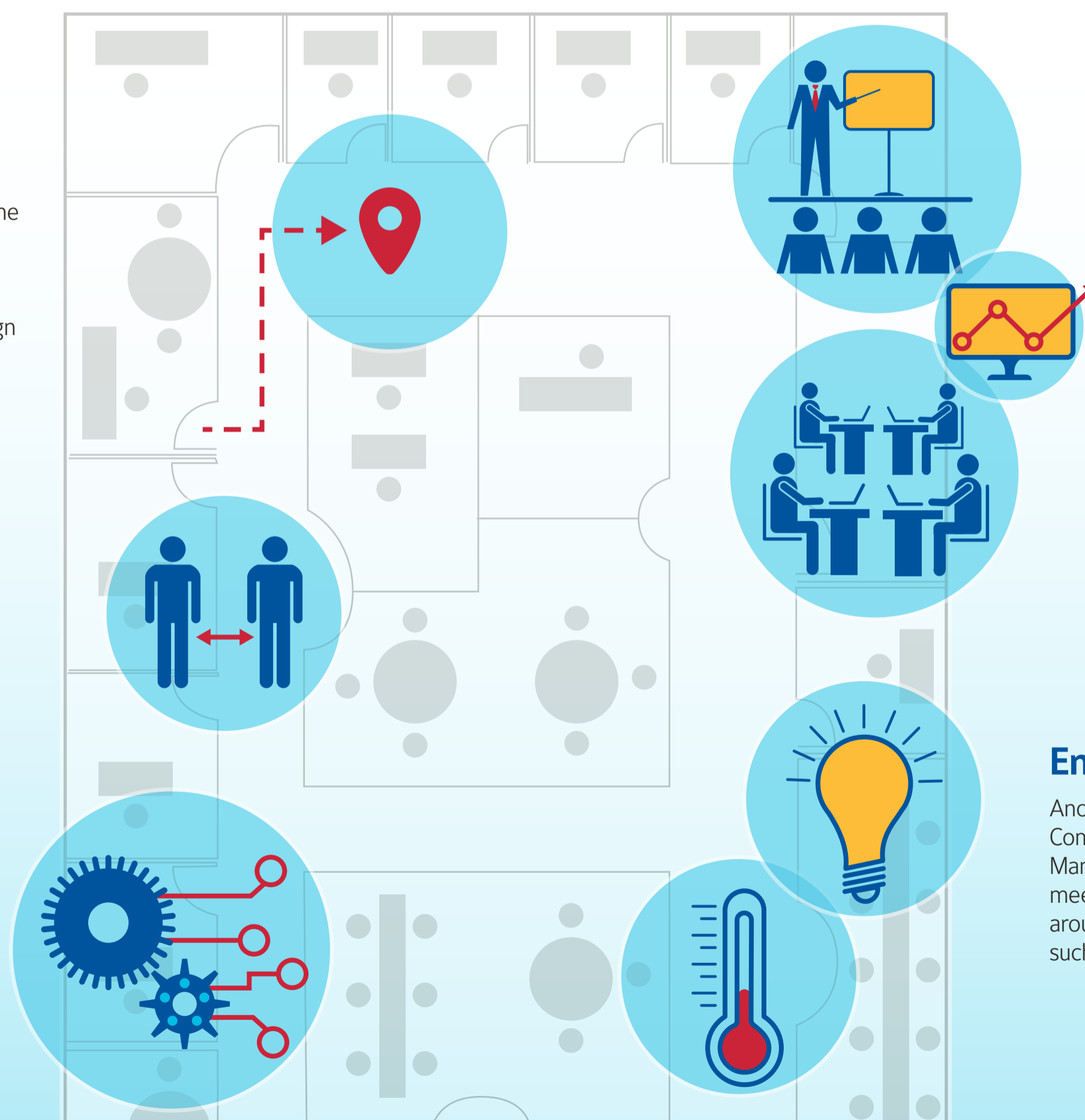
OpenBlue Location Manager contains small devices called transceiver modules that are plugged in around the office. Using Bluetooth, the transceiver modules receive anonymized data from employee badges and then send that data to the cloud. By using this anonymized data, Location Manager supports privacy by default and design without directly identifying individuals, so the system is configured to focus on the what, not the who.

A Proactive Approach to Physical Distancing

Location Manager helps keep mission-critical workplaces running smoothly by minimizing the business impact should an employee test positive with a virus. For nonmission-critical workplaces, Location Manager assists facilities in reopening their buildings along with their agile adaptation to the new ways of working that will emerge post-COVID-19.

Agnostic Platform

The OpenBlue solution is agnostic to any infrastructure, building automation system or service provider, which means it can integrate with existing technologies or systems.



Data-Driven Office Reconfiguration

With Location Manager, employers can group employees by team, function and neighborhood to gain insights into how different groups are moving around the office. Facility managers can then use that information to reconfigure the space to fit usage patterns, or modify hybrid working arrangements to allow specific groups to work remotely more frequently.

Environmental Controls

Another app from Johnson Controls, OpenBlue Companion, works in tandem with Location Manager to allow employees to find and reserve meeting rooms, plan a safe and efficient route around large buildings, and control office features such as lighting, blinds and temperature.